

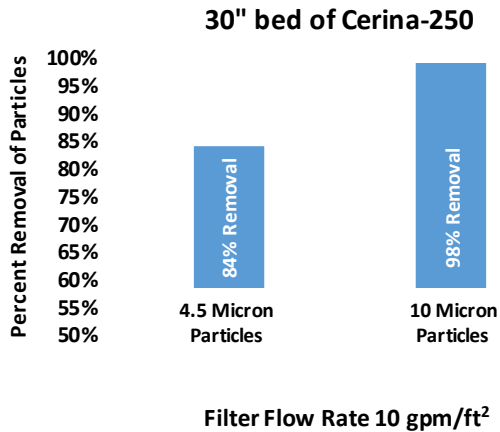
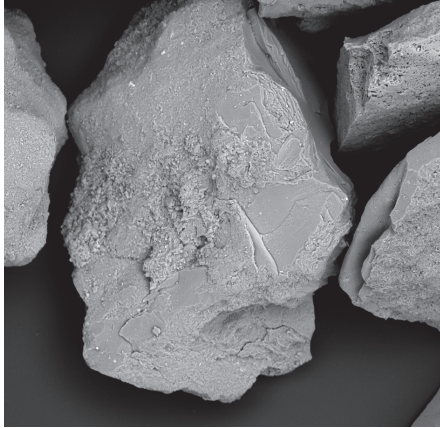


What is Cerina-250?

Cerina-250 is a ceramic, angular, highly textured filter media used in all types of high-rate pressure filter applications. Cerina-250 provides better water quality than most other medias at high filtration rates. Expected lifespan is 5 – 7 years.

Cerina-250 is ideal for pressure filter applications such as:

- Residential particle removal including sediment, iron & manganese, ferric-arsenate & Chrome (VI).
- Ground Water Filtration & surface water filtration for communal systems
- Industrial Filtration



PRODUCT SPECIFICATIONS

PARAMETER	CERINA-250
Effective Size	0.20 mm — 0.30 mm (50-70 Mesh)
Recommended Service Rate	10.0 gpm/ft ² (24 m/h)
Recommended Backwash Rate	8.0 gpm/ft ² (18 m/h)
Density	77 lbs/ft ³ (1.23 g/cm ³)
Uniformity Coefficient	< 1.4 (1.25 Typical)
Acid Solubility	<1% (0.1% typical)
Hardness Moh's	7.0

Standard packaging is 50 lb. (25 kg) 0.65 ft³ and 45 ft³ (1.27 M³) bulk bags.

Cerina-250 is considered inert and non-reactive and is compatible with acid, caustic and all types of oxidants. Cerina-250 can be used in harsh industrial filtration applications, chemical filtration and in high temperature processes up to 1000 F. (538 C.)

For typical down flow filtration use the recommend a 24" deep filter bed (610 mm), design flow rates will vary depending on solids loading and desired filter run times.



Cerina-250 has been tested and certified by the Water Quality Association according to NSF/ANSI 61

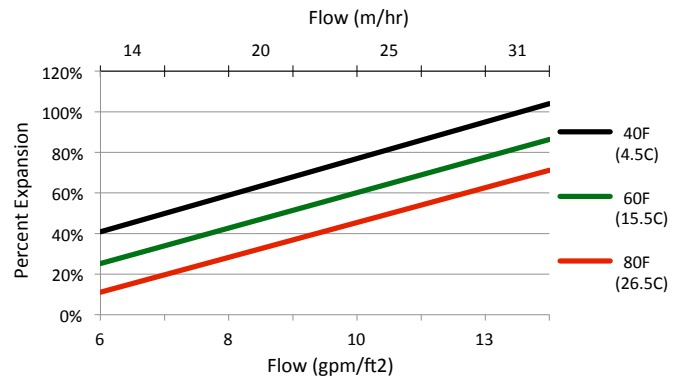
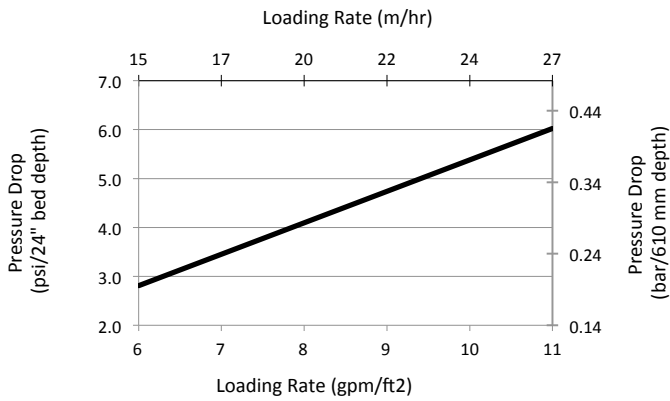
CONTACT US

sales@wateropolis.com • 440-596-0325 • www.wateropolis.com

CERINA-250



OPERATIONAL SPECIFICATIONS



Additional Technical Data

Typical 3 – 5 micron particle removal at 10 gpm/ft² (24 m/h) flow rate is 99.9%

ABOUT WATEROPOLIS Wateropolis Inc. is dedicated to identifying and developing new and innovative technologies for water and wastewater treatment. We look for simple, logical answers to complex questions.