



What is CeraCap? CeraCap is low density anthracite designed to sit on top of Ceraflow filter media.

Where is it used? CeraCap can be used on both Ceraflow-50 & Ceraflow-70.

Why is it used? CeraCap is used where high solids are present in filter feed water.

CeraCap is low density anthracite that is screened to a precise effective size (“ES”) and a low uniformity coefficient (“UC”). The low density of the material ensures that it will stay properly stratified creating a high solids retention zone at the top of a Ceraflow filter. The presence of CeraCap increases total solids capacity of the filter without compromising the effluent quality.

CeraCap is ideal in conjunction with Ceraflow for pressure filter applications such as:

- Where coagulation or filtration aids are employed.
- Highly variable feed water quality or where intermittent spikes of high solids may occur.
- High levels of ferric iron or oxidized manganese.



PRODUCT SPECIFICATIONS

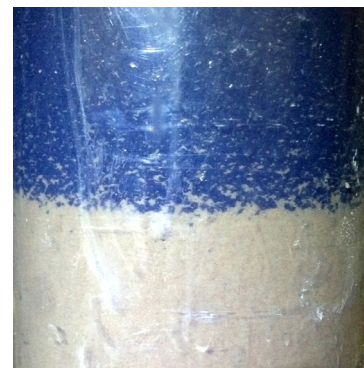
Parameter	CeraCap
Effective Size	0.5 mm — 0.6 mm (25-35 Mesh)
Uniformity Coefficient	< 1.4 (1.25 Typical)
Density	42 lbs/ft ³ (0.67 g/cm ³)
Compatible Ceraflow Media	Ceraflow-50 & Ceraflow-70
Recommended Backwash Rate	See Expansion Curves
Acid Solubility	<5%

CeraCap is low density anthracite specifically screened for compatibility with Ceraflow filter media. It is recommended for applications where there is an influent solids loading, > 2.0 ntu or 1.0 mg/l TSS .

CeraCap is pure anthracite and is considered inert and non-reactive and is compatible with all types of oxidants.

CeraCap with Ceraflow has a recommended operational flow rate of 8—10 gpm/ft² (18.3—24 m/h). Design flow rates will vary depending on solids loading and desired filter run times.

Standard packaging is 1.3 ft³ (0.03 M³) 50 lb bags (22.68 kg).



Note: Anthracite with a SG of 1.65 and bulk density of 55 lbs/ft³ will not work in conjunction with any Ceraflow products.

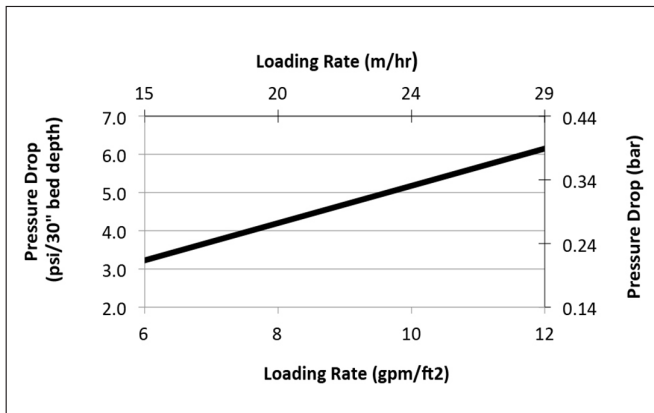
CONTACT US

sales@wateropolis.com • 440-596-0325 • www.wateropolis.com

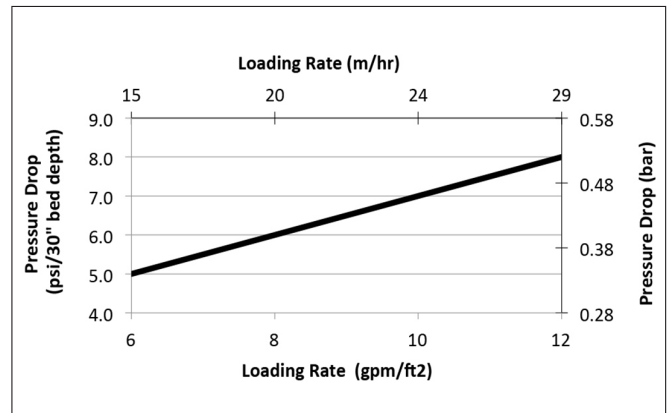


OPERATIONAL SPECIFICATIONS

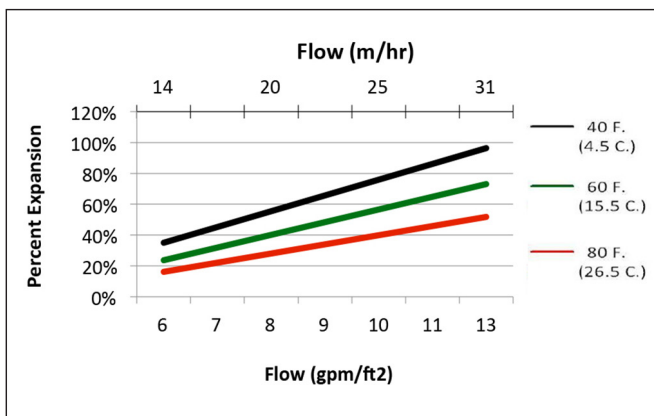
Ceraflow-50 w/ CeraCap



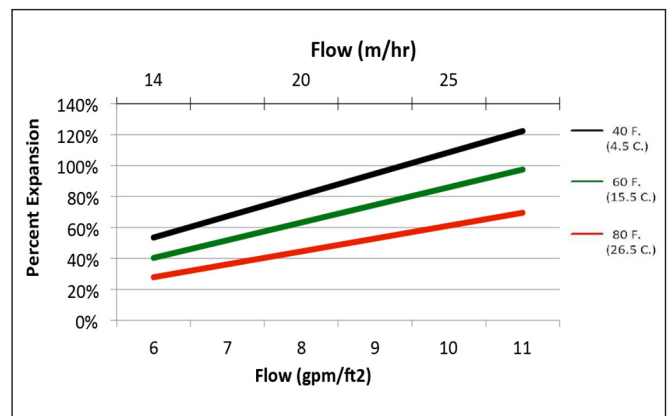
Ceraflow-70 w/ CeraCap



Ceraflow-50 w/CeraCap Backwash



Ceraflow-70 w/ CeraCap Backwash



Additional Technical Data

- Moh's hardness 2.7 typical
- Specific Gravity: 1.4

ABOUT WATEROPOLIS Wateropolis Inc. is dedicated to identifying and developing new and innovative technologies for water and wastewater treatment. We look for simple, logical answers to complex questions.